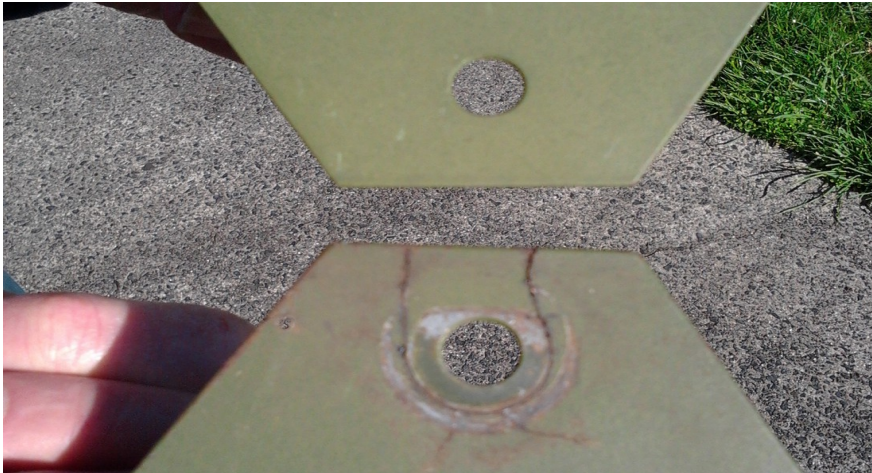


Defect report- CH601 wheel spat bracket fail

Make: Zenair
Model: CH601
TTIS: not specified
Reporter: Graeme Sherrard
Date: August 2014

Defect: Spat was found to be loose.

On disassembly and close inspection, one bracket was found to have a crack- initiated by the sharp edge of a washer creating a stress raiser, with the crack propagating neatly around the washer circumference and out to the bracket edge.



Stamped washers have a **rounded** edge on one face, and a **sharper** edge on the other from the press forming. When fitting it is advisable to ensure the **rounded** edge is against any light or flexible the base material to avoid stress raisers.



Rounded



Sharper

Spot the difference?